

Shandong Lingong originates from Qilu,
Today, it has the mission and great trust bestowed by
economy era,
With steady steps and strong body, it also shows to the
world with its heart and behavior,
——Shandong Lingong Reliability in action .



SDLG's products in Sahara

Contents

W 轮式装载机 Wheel Loader

LG968	06
LG959	07
LG958L	08
LG956L	09
LG938L	10
LG936L	11
LG918	12



LG969	13
LG953L	14
LG953	15
LG952H	16
ZL40F	17
LG933L	18

B 挖掘装载机 Backhoe Loader

LGB680	19
--------	----

H 液压挖掘机 Hydraulic Excavator

LG6220	20
LG665	21
LG660	22

V 振动压路机 Vibratory Roller

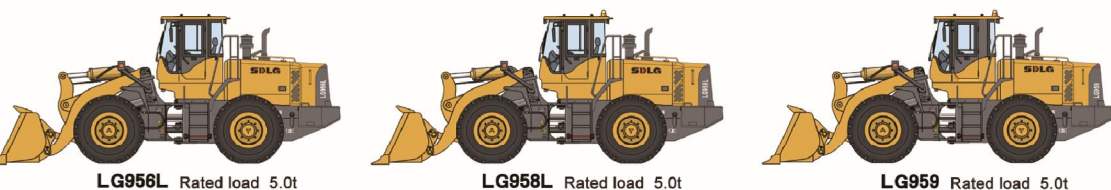
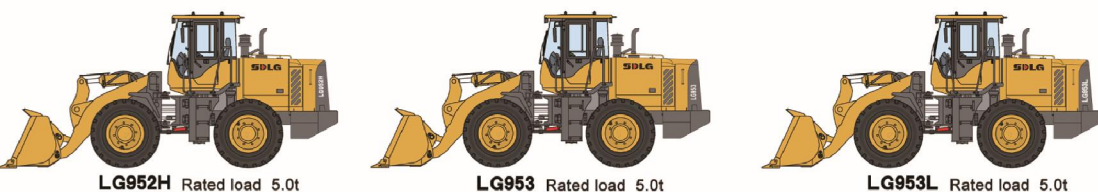
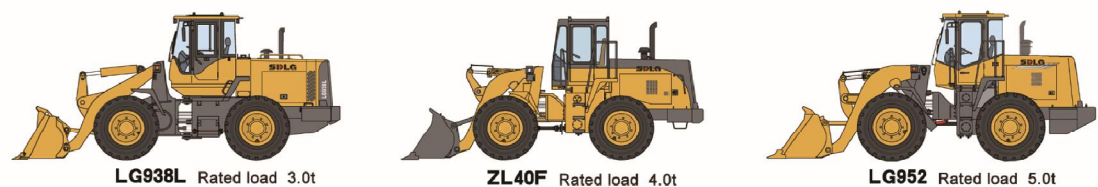
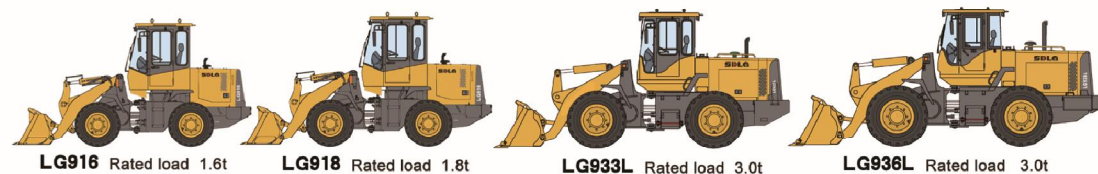
LGS820	23
LGS818	24
LGS816	25

T 三光轮静碾压机 Three-Steel-Wheel Road Roller

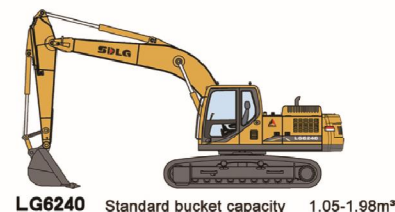
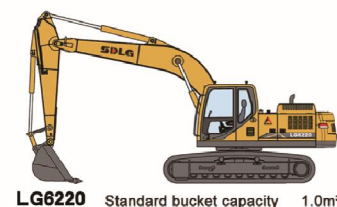
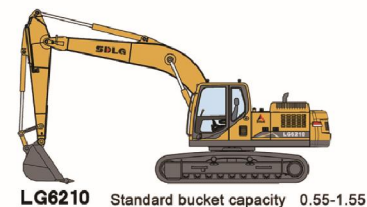
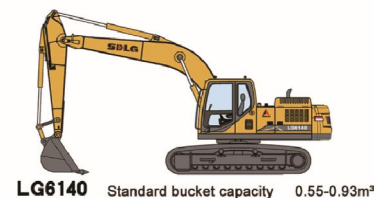
LGR81821	26
----------	----

Products Map

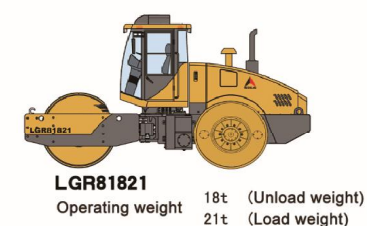
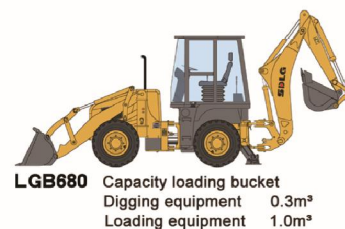
Wheel Loader



Hydraulic Excavator



Backhoe Loader



Vibratory Roller

WHEEL LOADER

W LG968 heel Loader

SDLG Loader

Leads A New Era of Energy Saving

- ZF counter shaft electro-hydraulic transmission and LG drive axle are configured, thus it has high reliability and long service life.
- Optimally designed working device has strong breakout force.
- New hinged connection form of tapered roll bearing is used for frame to make its service life to be longer.
- Hydraulic control mechanism with patented technology is used to control easily with high reliability.
- Preferred flow amplified hydraulic steering system is used to operate smoothly, conveniently and flexibly with stable and reliable performances.
- Unique heat insulation design of cooling system can effectively reduce water and oil temperatures as well as increase the service life of complete vehicle.

★ Main technical parameters

Item	Specifications	Item	Specifications	
Overall working weight (kg)	18400	Dumping distance (mm)	1033	
Rated bucket capacity (m ³)	3.5	Overall dimension (LxWxH)	8362x3210x3380mm	
Rated load (kg)	6000	Boom lifting time (s)	≤7.0	
Max.tractive force (kN)	≥165	Total time(s)	≤12	
Max.breakout force (kN)	≥198	Engine model	C6121ZG61B	WD10G240E11
Max.gradeability (°)	30	Rated power(kW)	174.5	175
Max.dumping height (mm)	3250	Rated speed(r/min)	2200	2200

Notice: the products with "★" are mainly for export

WHEEL LOADER



LG959

- ZF counter shaft electro-hydraulic transmission and ZF wet-type brake axle are equipped with big bearing capacity, long service life and high reliability. Electric and pneumatically-controlled internal expanding shoe parking brake is used to ensure it is safe and reliable.
- Semi-automatic shift control and single handle pilot control are used for any operation of complete vehicle. Four forward, three reverse, both the first gear and the second gear can be shifted automatically by KD key, the operation is convenient and flexible, the fatigue strength is low and the working efficiency is high, the utilization of engine power is reasonable and it can be more applicable to bad working conditions.
- Strong breakout force and lifting force: Large diameter dumping cylinder with breakout force up to 17.5 tons! Large diameter lift cylinder with the lifting force on the ground up to 15.4 tons!
- Strong stability of complete vehicle: Long wheel base and increased balance weight in design, the tilting load of line-up operation is large.
- Standard configuration: Rops/Fops cab.

★ Main technical parameters

Item	Specifications	Item	Specifications	
Overall working weight (kg)	16900	Dumping distance (mm)	1130	
Rated bucket capacity (m ³)	3.0	Overall dimension (LxWxH)	8017x3024x3382mm	
Rated load (kg)	5000	Boom lifting time (s)	≤6.4	
Max.tractive force (kN)	≥150	Total time(s)	≤11.3	
Max.breakout force (kN)	≥180	Engine model	6CTA8.3-215	C6121ZG50
Max.gradeability (°)	30	Rated power(kW)	160	162
Max.dumping height (mm)	3120	Rated speed(r/min)	2200	2200

WHEEL LOADER



LG958L

- It is equipped with ZF counter shaft electro-hydraulic gearbox with high reliability. It is also used with electric and pneumatically-controlled internal expanding shoe parking brake to brake safely and reliably.
- Semi-automatic shift control and single handle pilot control are used in any operation of complete vehicle. Gears are subdivided into four forward and three reverse. Both the first gear and the second gear can be shifted automatically by KD key. Any operation is convenient and flexible, fatigue strength is low, and working efficiency is high. The utilization of engine power is reasonable to be more applicable to bad working conditions.
- Strong breakout and lifting forces: It is configured with large diameter dumping cylinder with the bucket breakout force up to 17.5 tons! It is configured with large diameter lift cylinder with the lifting force on the ground can be up to 15.4 tons!
- Strong stability of complete vehicle: Long wheel base and increased balance weight in design, large tilting load of line-up operation.
- It is equipped with Dongfeng Cummins 6CTA8.3 engine. Shanghai C6121 can be optionally available.

★ Main technical parameters

Item	Specifications	Item	Specifications	
Overall working weight (kg)	16600	Dumping distance (mm)	1130	
Rated bucket capacity (m ³)	3.0	Overall dimension (LxWxH)	8079x3024x3382mm	
Rated load (kg)	5000	Boom lifting time (s)	≤6.4	
Max.tractive force (kN)	≥150.0	Total time(s)	≤11.3	
Max.breakout force (kN)	≥180.0	Engine model	6CTA8.3-215	C6121ZG50
Max.gradeability (°)	30	Rated power(kW)	160	162
Max.dumping height (mm)	3120	Rated speed(r/min)	2200	2200

WHEEL LOADER



LG956L

- The best match of big capacity torque converter with engine makes the complete vehicle to have strong tractions, and over 16.5 tons of force is used to insert into material pile.
- Large diameter dumping cylinder with breakout force up to 17.5 tons! Large diameter lift cylinder with the lifting force on the ground up to 15.4 tons!
- Long wheel base and increased balance weight in design can improve the stability of complete vehicle, the tilting load of line-up operation is over 12.5 tons.
- High strength structural parts can be applicable to more complex working conditions and the box-type articulated frame can still work reliably after 200,000-time strengthen tests of fatigue life.

★ Main technical parameters

Item	Specifications	Item	Specifications	
Overall working weight (kg)	16900	Dumping distance (mm)	1130	
Rated bucket capacity (m³)	3.0	Overall dimension (LxWxH)	8079x3024x3382mm	
Rated load (kg)	5000	Boom lifting time (s)	≤6.4	
Max.tractive force (kN)	≥150	Total time(s)	≤11.3	
Max.breakout force (kN)	≥180	Engine model	6CTA8.3-215	C6121ZG50
Max.gradeability (°)	30	Rated power(kW)	160	162
Max.dumping height (mm)	3120	Rated speed(r/min)	2200	2200

WHEEL LOADER



LG938L

- Dongfeng Cummins 6BT5.9-C130 engine with less oil consumption, low noises and small emissions
- YD13 electro-hydraulic shift counter shaft gearbox is used firstly on 3-ton loader in China. It has great tractions and strong joint operating performance with convenient and flexible operations.
- New type cab is sealed with shock absorption device, and it can provide wide vision and high grade interiors to make you feel safe and comfortable. It is equipped with air conditioner.
- Pilot single-handle is used for hydraulic system with convenient and quick operations to reduce any labor intensity of operators greatly.

★ Main technical parameters

Item	Specifications	Item	Specifications
Overall working weight (kg)	10700	Dumping distance (mm)	1050
Rated bucket capacity (m³)	1.8	Overall dimension (LxWxH)	7100x2510x3170mm
Rated load (kg)	3000	Boom lifting time (s)	≤5.3
Max.tractive force (kN)	≥105	Total time(s)	≤9.2
Max.breakout force (kN)	≥96	Engine model	6BT5.9-C130
Max.gradeability (°)	30	Rated power(kW)	97
Max.dumping height (mm)	2950	Rated speed(r/min)	2200

WHEEL LOADER



LG936L

- Standard hydraulic system with pilot control to minimize labor intensity of operator.
- The engine hood is high, and its rear is widened so as to make the repair more conveniently; the structure of radiator has been optimized to increase effective heat radiation area.
- High class, shock-absorbing and comfortable seats are used to increase the comfort of operation.
- 08 type of 956 Cab is used to provide wide vision and good visual effect. A/C & warmer is set outside, internal operating space is big, front defrosting and air supply functions are increased to make any operation being comfortable more.
- 5-ton SDLG transmission is used to have higher reliabilities.

★ Main technical parameters

Item	Specifications	Item	Specifications	
Overall working weight (kg)	10700	Dumping distance (mm)	1050	
Rated bucket capacity (m ³)	1.8	Overall dimension (LxWxH)	7100x2510x3170mm	
Rated load (kg)	3000	Boom lifting time (s)	≤5.3	
Max. tractive force (kN)	≥105	Total time (s)	≤9.2	
Max. breakout force (kN)	≥96	Engine model	6BT5.9-C130	TD226B-61G15
Max. gradeability (°)	30	Rated power (kW)	97	92
Max. dumping height (mm)	2950	Rated speed (r/min)	2200	2200

WHEEL LOADER



LG918

- Large wheel base of complete vehicle (2260mm), great operation quality and high longitudinal stability.
- Working device has automatic leveling functions with high efficiency and can reduce the intensity of driver operations.
- New type of 24° cone elastic sealing pipe connection structure with reliable seals to ensure no leakage.
- New vibration absorbing system to make the complete vehicle being stable and greatly improve operation comfort of driver.
- Pallet fork and multipurpose bucket can be available optionally.

★ Main technical parameters

Item	Specifications	Item	Specifications	
Overall working weight (kg)	6200	Dumping distance (mm)	920	
Rated bucket capacity (m ³)	1.0	Overall dimension (LxWxH)	5798x2140x2920mm	
Rated load (kg)	1800	Boom lifting time (s)	≤4.8	
Max. tractive force (kN)	≥56	Total time (s)	≤9.1	
Max. breakout force (kN)	≥58	Engine model	4TNV98T-PLYS	YC4D80-T10
Max. gradeability (°)	30	Rated power (kW)	57.3	58
Max. dumping height (mm)	2510	Rated speed (r/min)	2400	2400

WHEEL LOADER



LG969

- ZF counter shaft electro-hydraulic transmission and ZF wet-type brake axle are configured to have high carrying capacity, long service life and high reliability.
- Optimally designed working device with strong breakout force.
- Newly articulated form of tapered roll bearing is used for frame to have longer service life.
- Hydraulic control mechanism with patented technology is used to have high reliability and be controlled easily.
- Priority-based hydraulic flow amplified steering system is used to make its operation being smooth, convenient and flexible as well as its performance be stable and reliable.
- Unique heat insulation design of cooling system can effectively reduce water and fuel temperatures as well as increase the service life of complete vehicle.
- Standard configuration: Rops/Fops cab.

★ Main technical parameters

Item	Specifications	Item	Specifications
Overall working weight (kg)	18000	Dumping distance (mm)	1033
Rated bucket capacity (m ³)	3.5	Overall dimension (LxWxH)	8362x3210x3380mm
Rated load (kg)	6000	Boom lifting time (s)	≤7.0
Max.tractive force (kN)	≥165	Total time(s)	≤12
Max.breakout force (kN)	≥198	Engine model	C6121ZG61B
Max.gradeability (°)	30	Rated power(kW)	174.5
Max.dumping height (mm)	3250	Rated speed(r/min)	2200

WHEEL LOADER



LG953L

- The fuel consumption of complete vehicle will be reduced 9.36% and the working efficiency will be increased 8.15% under any working condition of gravel loading. The average fuel consumption can be saved over RMB 42,000 yuan each year.
- Powerful working performance: the working pressure of hydraulic system can reach to 18MPa and the breakout force on the ground is over 16 tons.
- Stable and flexible site transportation: The tilting angle of bucket is big and the full-load coefficient is high, and the bucket will be close to booms after tilting. At the same time, the turning radius of rear wheels at the outside is only 6.2 meters so that the site transportation can be more flexible.
- The bucket has high-position automatic leveling function so as to simplify movements and reduce any labor intensity of drivers.

Main technical parameters

Item	Specifications	Item	Specifications
Overall working weight (kg)	16600	Dumping distance (mm)	1148
Rated bucket capacity (m ³)	3.0	Overall dimension (LxWxH)	7753x3024x3423mm
Rated load (kg)	5000	Boom lifting time (s)	≤5.7
Max.tractive force (kN)	≥150	Total time(s)	≤10.2
Max.breakout force (kN)	≥160	Engine model	WD10G220E13
Max.gradeability (°)	29	Rated power(kW)	162
Max.dumping height (mm)	3050	Rated speed(r/min)	2000

WHEEL LOADER



LG953

- The low speed torque of engine is increased, both transmission and hydraulic systems are matched in a reasonable way, the speed of vehicle is high and the lifting time is short, the operating cycle of vehicle is less than 20 seconds and the working efficiency is 10% higher than the average level in industry.
- The working pressure of hydraulic system can reach to 18MPa, the breakout force on the ground is over 16 tons, and so it has stronger boom lifting force and breakout force.
- The tilting angle of bucket is big and the full load coefficient is high; the bucket will be close to boom after tilting, it will prevent materials in LG953 from scattering during the transport process, the stability is high and the damage of tires caused by sharp stone can be minimized. At the same time, the turning radius of rear wheels at the outside is only 6.2 meters so that any site transportation can be more flexible.

Main technical parameters

Item	Specifications	Item	Specifications
Overall working weight (kg)	16600	Dumping distance (mm)	1148
Rated bucket capacity (m ³)	3.0	Overall dimension (LxWxH)	7753x3024x3423mm
Rated load (kg)	5000	Boom lifting time (s)	≤5.7
Max.tractive force (kN)	≥150	Total time(s)	≤10.2
Max.breakout force (kN)	≥160	Engine model	WD10G220E11
Max.gradeability (°)	29	Rated power(kW)	162
Max.dumping height (mm)	3050	Rated speed(r/min)	2200

WHEEL LOADER



LG952H

- The bucket design has been optimized, with high full-load efficiency and small inserting resistance, hence, it is more applicable for materials in bulk.
- Middle and short-wheelbase vehicle body designs. The minimum turning radius on the external side of the rear wheel is less than 5.8m, which caters to work in narrow site.
- The product maintains LG953's high-position automatic leveling functions, reducing the driver's work intensity.
- The optimal matching of engine rotating speed, traction force, pump capacity, and hoisting time helps improve the vehicle's operating efficiency and reduce the oil consumption.
- The product is equipped with Shandong Lingong's energy-saving and special-purpose engine, featuring low rotating speed as well as professional transmission system.

Main technical parameters

Item	Specifications	Item	Specifications
Overall working weight (kg)	16400	Dumping distance (mm)	1190
Rated bucket capacity (m ³)	2.8	Overall dimension (LxWxH)	7663x3024x3349mm
Rated load (kg)	5000	Boom lifting time (s)	≤5.7
Max.tractive force (kN)	≥150.0	Total time(s)	≤10.2
Max.breakout force (kN)	≥160.0	Engine model	WD10G220E13
Max.gradeability (°)	28	Rated power(kW)	162
Max.dumping height (mm)	3070	Rated speed(r/min)	2000

WHEEL LOADER



ZL40F

- Environmentally Weichai WD615 series engine that has low noises and can be started up easily.
- Double-turbine torque converter with planetary power shift transmission to automatically regulate output torque and rotating speed as well as protect engine and transmission system.
- Fully hydraulic steering, small turning radius, convenient and flexible operation of complete vehicle.
- "Z" type reverse-six-link structure for work load to provide broad visions for driver.
- Structural components are selected with high-quality carbon steel and welded by welding robot so as to have good welding qualities and high overall strengths.
- Gas-cap oil disc brake on four wheels is for braking system with large braking force, smooth braking and high security.

Main technical parameters

Item	Specifications	Item	Specifications
Overall working weight (kg)	13000	Dumping distance (mm)	960
Rated bucket capacity (m ³)	2.2	Overall dimension (LxWxH)	6840x2704x3239mm
Rated load (kg)	4000	Boom lifting time (s)	≤7.5
Max.tractive force (kN)	≥135	Total time(s)	≤13.5
Max.breakout force (kN)	≥110	Engine model	WD615.0064
Max.gradeability (°)	30	Rated power(kW)	118
Max.dumping height (mm)	2960	Rated speed(r/min)	2000

WHEEL LOADER



LG933L

- Hangzhou Advance BS428 fixed-axis transmission widely recognized by markets is configured.
- The engine hood is high, and its rear is widened so as to maintain more conveniently; the structure of radiator has been optimized to increase effective heat radiation area so as to ensure that the loader can always work in the optimum temperature range.
- High class, shock-absorbing and comfortable seats are used.
- Shaft-controlled variable speed control mechanism is used to make any operation more conveniently. Oil pressure switch is used for alarming and the reliability is further improved.
- Yuchai YC6B125-T11 engine can be optionally available.

Main technical parameters

Item	Specifications	Item	Specifications	
Overall working weight (kg)	10200	Dumping distance (mm)	1050	
Rated bucket capacity (m ³)	1.8	Overall dimension (LxWxH)	6970x2510x3087mm	
Rated load (kg)	3000	Boom lifting time (s)	≤5.3	
Max.tractive force (kN)	≥96	Total time(s)	≤9.2	
Max.breakout force (kN)	≥96	Engine model	TD226B-61G14	YC6B125-T11
Max.gradeability (°)	30	Rated power(kW)	92	92
Max.dumping height (mm)	2950	Rated speed(r/min)	2300	2300

BACKHOE LOADER



LGB680

- Yuchai YC4D80-T10 series engine is configured to have strong power and low noises, and it can save energy and protect environment.
- Its transmission system consists of double handles and hydraulic shift, its control is convenient and reliable, and it has good economy and higher productivity.
- Fully hydraulic load-sensing steering system.
- Single-tube gas-cap oil and caliper disc brake is used for braking system, the braking force is large, the disassembly and assembly are convenient, and the system is safe and reliable.
- Specific central frog support is more stable, safe and reliable than other forms of support devices during breaking rock and depth excavation.
- Automatic control system of hydraulic oil temperature is set, the fan will open automatically for cooling when the temperature is over 60℃, it can save energy reliably.

Main technical parameters

Item	Specifications	Item	Specifications
Overall working weight (kg)	8300	Max.breakout force (kN)	≥53.5
Capacity digging bucket (m³)	0.3	Level passing radius (mm)	5225
Capacity loading bucket (m³)	1.0	Engine model	YC4D80-T10
Max.tractive force (kN)	≥60	Rated power (kw)	58
Max.digging force (kN)	≥44.4	Rated speed(r/min)	2400

HYDRAULIC EXCAVATOR



LG6220

- The net power of German Deutz engine configured exclusively to excavator can reach to 127KW, and ISUZU engine is optionally available.
- EUP structure with 12-year European market verification is used with low requirements on fuel oil quality and can ensure the reliability of complete vehicle; It can save 10% of oil compared to similar products under the premise of satisfying the emission requirements.
- Superior excavation performance, design of enhanced structural parts, analysis on computer finite element, high tensile steel plate for key positions so as to improve the adaptive capacity of complete vehicle in bad operation conditions.
- Negative flow control hydraulic system and pilot proportional control operating system are used to have good micro-motion performances.
- ESS power control system is used with multi-power modes to adapt to different operations. Self-checking, monitoring and emergency fault alarms are set for color monitors to improve the operating level of man-machine interface.

Main technical parameters

Item	Specifications	Item	Specifications
Overall working weight (kg)	21800	Overall dimension (LxWxH)	9690x2990x3000mm
Standard bucket capacity (m³)	1.0	Engine model	DEATZBF6M2012C
Max.break force (kN)	128	Rated power(kW)	127
Turning speed (r/min)	0-11.5	Rated speed(r/min)	2000
Travel speed (km/h)	3.6-5.4	Max.flux (L/min)	230
Gradeability (°)	35	Working pressure (kgf/m²)	350
Earth radio (kPa)	44.1	Width of track (mm)	600

HYDRAULIC EXCAVATOR



LG665

- Full set of imported hydraulic parts, PARKER hydraulic hoses and joints can ensure the reliability and stability of system.
- Total power control hydraulic system and pilot control operating system are used to have good micro-motion performance, and the labor can be saved.
- Self-checking, monitoring and emergency fault alarms are set for any monitor with centralized functions so as to raise the operating level of man-machine interface.
- Design of enhanced structural parts is analyzed by computers in an optimized way, high tensile steel plate is used for key positions and the adaptive capacity of complete vehicle in bad operation conditions is improved.
- Engine with low noises and high power is configured with advantages such as low emissions and noises

Main technical parameters

Item	Specifications	Item	Specifications
Overall working weight (kg)	5800	Overall dimension (LxWxH)	5910x1960x2620mm
Standard bucket capacity (m ³)	0.22	Engine model	YANMAR 4TNV94L
Max.break force (kN)	45	Rated power(kW)	35.5
Turning speed (r/min)	0-11.5	Rated speed(r/min)	2200
Travel speed (km/h)	2.4/4.8	Max.flux (L/min)	138
Gradeability (°)	30	Working pressure (kgf/m ²)	250
Earth radio (kPa)	32	Width of track (mm)	400

HYDRAULIC EXCAVATOR



LG660

- Engine with low noises and high power is configured with advantages such as low emissions and noises.
- Full set of imported hydraulic parts, PARKER hydraulic hoses and joints can ensure the reliability and stability of system.
- Total power control hydraulic system and pilot control operating system are used to have good micro-motion performance, and the labor can be saved.
- Design of enhanced structural parts is analyzed by computers in an optimized way, high tensile steel plate is used for key positions and the adaptive capacity of complete vehicle in bad operation conditions is improved.
- Self-checking, monitoring and emergency fault alarms are set for any monitor with centralized functions so as to raise the operating level of man-machine interface.

Main technical parameters

Item	Specifications	Item	Specifications
Overall working weight (kg)	5800	Overall dimension (LxWxH)	5910x1960x2620mm
Standard bucket capacity (m ³)	0.22	Engine model	YANMAR 4TNV94L
Max.break force (kN)	40	Rated power(kW)	35.5
Turning speed (r/min)	0-10	Rated speed(r/min)	2200
Travel speed (km/h)	2.2/4.2	Max.flux (L/min)	120
Gradeability (°)	30	Working pressure (kgf/m ²)	220
Earth radio (kPa)	32	Width of track (mm)	400

VIBRATORY ROLLER



LGS820

- Mechanical travel, hydraulic vibration, double frequency and double amplitude, and hydraulic steering is convenient and flexible.
- Hang Chi power-shift transmission, electro-hydraulic control is used for steering and speed change. Its operation is comfortable, the speed change is stable, the shock impact is small and the service life of transmission is prolonged.
- Germany REXROTH or U.S. SAUER vibration pumps, and motors, pipes, joints and seals shall be used PARKER products to ensure high performance and reliability of hydraulic vibration system.
- It has independent excitation room, flexible couplings, and special vibration bearing same with the one in Germany FAG road roller.
- Reinforced front and rear frames are welded by high-quality plates and sectional materials, they have firm structures and will never be deformed, and they are applicable to heavy load operations.
- Special heavy-duty drive axle for Lingong road roller is used with reliable performances, and it can be maintained conveniently.
- D6114 series diesel engine is selected as the engine; it has strong power, high torque and low noise.

Main technical parameters

Item	Specifications	Item	Specifications
Overall working weight (kg)	20000	Vibrating force (kN)	360/280
Front wheel weight (kg)	10000	Overall dimension (LxWxH)	6025x2430x3220mm
Rear wheel weight (kg)	10000	Min.turning radius(mm)	455
Vibrating frequency (high)	35Hz	Width of vibrating wheel (mm)	2150
Vibrating frequency (low)	28Hz	Engine model	D6114ZG6B
Big amplitude (mm)	2.0	Rated power(kW)	132
Small amplitude (mm)	1.0	Rated speed(r/min)	2000

VIBRATORY ROLLER



LGS818

- Mechanical travel, hydraulic vibration, double frequency and double amplitude, and hydraulic steering is convenient and flexible
- Germany REXROTH or U.S. SAUER vibration pumps, motors, pipes, joints and seals shall be used with PARKER products to ensure high performance and reliability of hydraulic vibration system.
- It has independent excitation room, flexible couplings, and special vibration bearing for Germany FAG road roller.
- Special heavy-duty drive axle for Lingong road roller is used with reliable performances, and it can be maintained conveniently.
- D6114 series diesel engine is selected as the engine; it has strong power, high torque and low noise.

Main technical parameters

Item	Specifications	Item	Specifications
Overall working weight (kg)	18000	Vibrating force (kN)	320/200
Front wheel weight (kg)	8550	Overall dimension (LxWxH)	6025x2400x3220mm
Rear wheel weight (kg)	9450	Min.turning radius(mm)	390
Vibrating frequency (high)	35Hz	Width of vibrating wheel (mm)	2150
Vibrating frequency (low)	28Hz	Engine model	D6114ZG6B
Big amplitude (mm)	2.0	Rated power(kW)	128
Small amplitude (mm)	1.0	Rated speed(r/min)	2000

VIBRATORY ROLLER



- Mechanical travel, hydraulic vibration, double frequency and double amplitude, and hydraulic steering being convenient and flexible.
- Germany REXROTH or U.S. SAUER vibration pumps, motors, pipes, joints and seals shall be used with PARKER products to ensure high performance and reliability of hydraulic vibration system.
- It has independent excitation room, flexible couplings, and special vibration bearing for Germany FAG road roller.
- Special heavy-duty drive axle for Lingong road roller is used with reliable performances, and it can be maintained conveniently.
- D6114 series diesel engine is selected as the engine; it has strong power, high torque and low noise.

Main technical parameters

Item	Specifications	Item	Specifications
Overall working weight (kg)	16000	Vibrating force (kN)	295/230
Front wheel weight (kg)	7800	Overall dimension (LxWxH)	5920x2380x3220mm
Rear wheel weight (kg)	8200	Min.turning radius(mm)	455
Vibrating frequency (high)	35Hz	Width of vibrating wheel (mm)	2130
Vibrating frequency (low)	28Hz	Engine model	D6114ZG10B
Big amplitude (mm)	2.0	Rated power(kW)	115
Small amplitude (mm)	1.0	Rated speed(r/min)	2000

THREE-STEEL-WHEEL ROAD ROLLER

- Its front and rear frames are hinged though cross shaft, hydraulic steering with the small turning radius, and the operation is convenient and flexible.
- Front wheel in frame can realize some certain angle of swaying motion.
- Fully-enclosed cab is spacious as well as can provide wide vision and comfortable operation.
- Yuchai in-line, water-cooled four-stroke and direct injection diesel engine.
- Air-conditioner is optionally available, and heater is standard configurations.

Main technical parameters

Item	Specifications	Item	Specifications
Engine power (kw)	75	Rear wheel static weight	
Operating weight		Unload weight (n/cm)	1083
Unload weight (kg)	18000	Load weight (n/cm)	1263
Load weight (kg)	21000	Gradeability (°)	20
Front wheel static load		Min.turning radius (mm)	5880
Unload weight (n/cm)	475	Min.terrain clearance (mm)	442
Load weight (n/cm)	555	Overall dimension (LxWxH)	5895x2260x3220mm